



THE CURBSIDE ORGANIC PROGRAM



The **FIRST** Municipality in New Jersey to collect food and organic waste from residents and compost it!

Princeton Department of Public Works (609) 688-2566
Janet Pellichero, CRP/SRMP Recycling Coordinator

PRINCETON COMPOSTS!

Diverting food and organic waste from the landfill since 2011!

Started in June 2011 in the Princeton Township Department of Public Works as a 3 month Pilot program, the Curbside Organic Program is here to stay!

Instead of landfilling food waste and other compostable material such as paper napkins & paper towels, you put them into the green organic cart that is provided by Sol Terra. Every Wednesday you leave the cart at the curb to be emptied. It's that easy!

Without all the food waste & organic material, your ordinary trash will take longer to fill. Many participants in the program DO NOT put a trash container out for weekly collection.

How much does it cost?

\$65.00 for WEEKLY collection through January 31, 2018.
Collection is every Wednesday.

What goes in the green organic cart?

A tremendous amount of material; not just left-over food (including meat, fish & bones) but also PIZZA BOXES, soiled paper products, and most yard waste too!



Be SEEN with the GREEN! Don't send organics to the landfill!
PRINCETON COMPOSTS! Join today!

**Our compost facility;
Two Particular Acres in Royersford, PA**



Our trash is taken to the GROWS Landfill in Tullytown, PA.
Zero Waste America provided this picture

We give you everything you need to participate!

A 32 gallon wheeled cart with lid

A counter top collector for your kitchen scraps

Compostable bags to line your Kitchen Collector

Did you know?

It costs \$118.00 per ton to dispose of our trash, one of the highest in NJ!

According to a recent study by Mercer County, almost 25% of our trash is food and organic waste.

Removing organics from trash reduces methane gas created in landfills.

Keep trash out of landfills. Landfill space is valuable and slowly decreasing.

Participants receive **FREE** Compost each spring!

CLICK FOR
THE GUIDE TO YOUR CONTAINERS:

CLICK HERE TO JOIN:

**CLICK HERE TO PRINT AND MAIL
A REGISTRATION FORM:**

JOIN TODAY!
688-2566



Why Compost?

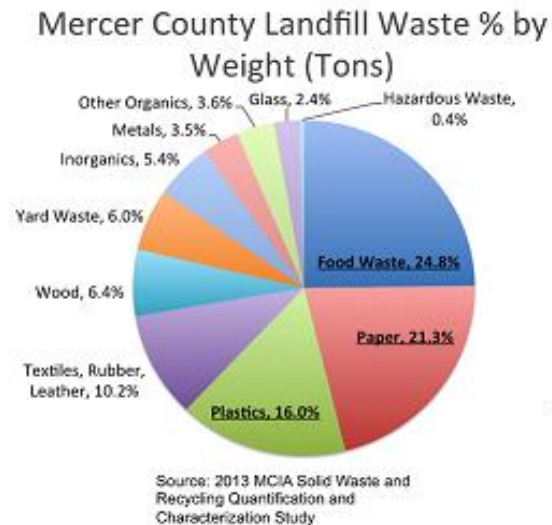
Composting is a natural process that turns organic material into a nutrient-rich soil amendment (compost) that is valuable to industries and the environment. Composting diverts materials away from landfills, which are costly and are an unsustainable method of waste disposal. According to the United States Environmental Protection Agency, buried waste is the #1 source of human-caused methane gas, a potent greenhouse gas that is a major contributor to global warming. When organic material like food and yard waste decomposes in an anaerobic, or oxygen-free, environment like a landfill, methane gas is produced. Since composting diverts these materials from landfills, it thereby reduces the amount of methane gas that ends up in our atmosphere.

Try Back Yard Composting!

Composting is easy to do and provides excellent fertilizer for your lawn and garden. It also reduces the amount of trash you send to the landfill. With many environmental benefits, composting also provides financial benefits and the satisfaction of knowing you are moving towards a more sustainable future.

- * You create a rich fertilizer: Your composted scraps become a nutrient-rich, organic fertilizer that can be used to improve your garden, landscaping and grass.
- * Gardens fed with compost also require less water and less fertilizers to produce the same amount of growth as a garden without composted matter in the soil.
- * Less garbage: Pay attention to the reduction of waste in your own kitchen garbage when you compost and you get an idea of how a composting community can reduce garbage in our landfill.

What's in our Trash?

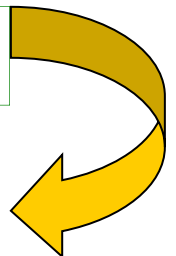
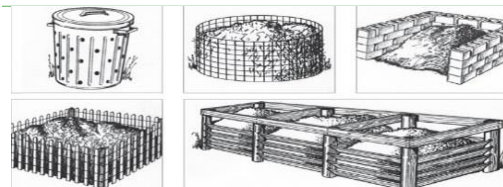


Interested in learning different ways you can compost at home?

Rutgers Cooperative Extension offers a variety of Fact Sheets to help guide you. Click on the link to visit their website:
<http://njaes.rutgers.edu/extension/>



Check out the different types of compost bins that you can make or purchase!



Methane is one of the most potent greenhouse gases: It's 20 to 25 times more powerful in trapping heat in the atmosphere than carbon dioxide.

A GUIDE TO YOUR CONTAINERS

GREEN Organic Cart

COLLECTED EVERY WEDNESDAY

PLEASE: NO PLASTICS, GLASS or ALUMINUM.
USE COMPOSTABLE bags only, no Biodegradable

Meat, Poultry (bones also) Fish (including shellfish)

Dairy Products

Flower & Vegetable Garden Trimmings & Waste

Houseplants & Flower Bouquets

Fruits & Nuts (including pits) & Peels

Vegetables & Vegetable Peels

Bread, Pasta & Grains

Liquids & Sauces

Coffee Grounds & Filters

Tea Bags (remove staple)

Spoiled/Expired Foods

Grass and Leaves

Weeds

Branches (2'x4") or curbside (preferable)

Soiled/greasy newspaper

Soiled/greasy paper

Paper Plates & Cups/Cardboard coffee cups holders

Paper Towels & Napkins

Paper Food Wrap

Paper Take-out Containers

Pizza Boxes

Egg Shells

Egg Cartons (non-styrofoam)

Waxed Cardboard & Waxed Paper

Plate Scrapings

Oils, Fats & Butters

Brown Paper Bags (use to line your collector)

YELLOW Recycle Container

COLLECTED EVERY OTHER MONDAY

No Green, it ALL goes together for Single Stream Recycling
Please, NO PLASTIC BAGS, Yellow containers are FREE & available at the Public Works Garage, 27 N. Harrison St.

Plastics marked with either #1 or #2 recycle symbol (lids are ok)

Plastic Beverage Bottles, Milk Jugs, Detergent & Shampoo containers (lids are ok)

Glass Food & Beverage Jars/Bottles

Computer/ Copier Paper

Clean Newspaper

Clean Paper

Junk Mail

Shoe Boxes

Pet Food Cans

Dry Soap Boxes

Clean Cardboard

Cereal Boxes (remove liners)

Cookie & Cracker Boxes (remove liners)

Stationary (No metallic foil)

Envelopes (It's ok to leave windows in)

Juice & Beverage Cartons including Juice Boxes

Telephone Directories & Paperback Books

Hardcover Books with the covers removed

Brown Paper Bags (or use to line kitchen collector)

Break down all large boxes

DO NOT RECYCLE:

PUT THESE ITEMS IN THE TRASH:

PLASTIC BAGS, PIZZA BOXES (organic cart),
LIGHT BULBS, DRINKING GLASSES, DISHES
& BROKEN WINDOW GLASS, MIRRORS,
CERAMICS & POTTERY, AEROSOL CANS,
CLOTHES HANGERS, STYROFOAM, BULKY
METALS, PLASTIC YARD TOYS, MOTOR OIL
& ANTI FREEZE CONTAINERS, BANDAGE &
COOKIE TINS, CARBON PAPER, WAXED
PAPER (organic cart), PLASTICS # 3-7,
FLUORESCENT BULBS, CFL BULBS

Trash Cart

COLLECTED BY SCHEDULE

Plastic Bags & Plastic Food Wrap; Styrofoam & Packing Peanuts; Bulky Metals, Plastics Marked #3-#7, Diapers; Pet Waste & Litter; Lumber & Fencing, Aluminum Foil; Feminine Hygiene Products, Baking Trays, Microwave Trays, Garden Nursery Containers & Trays, Household refuse.