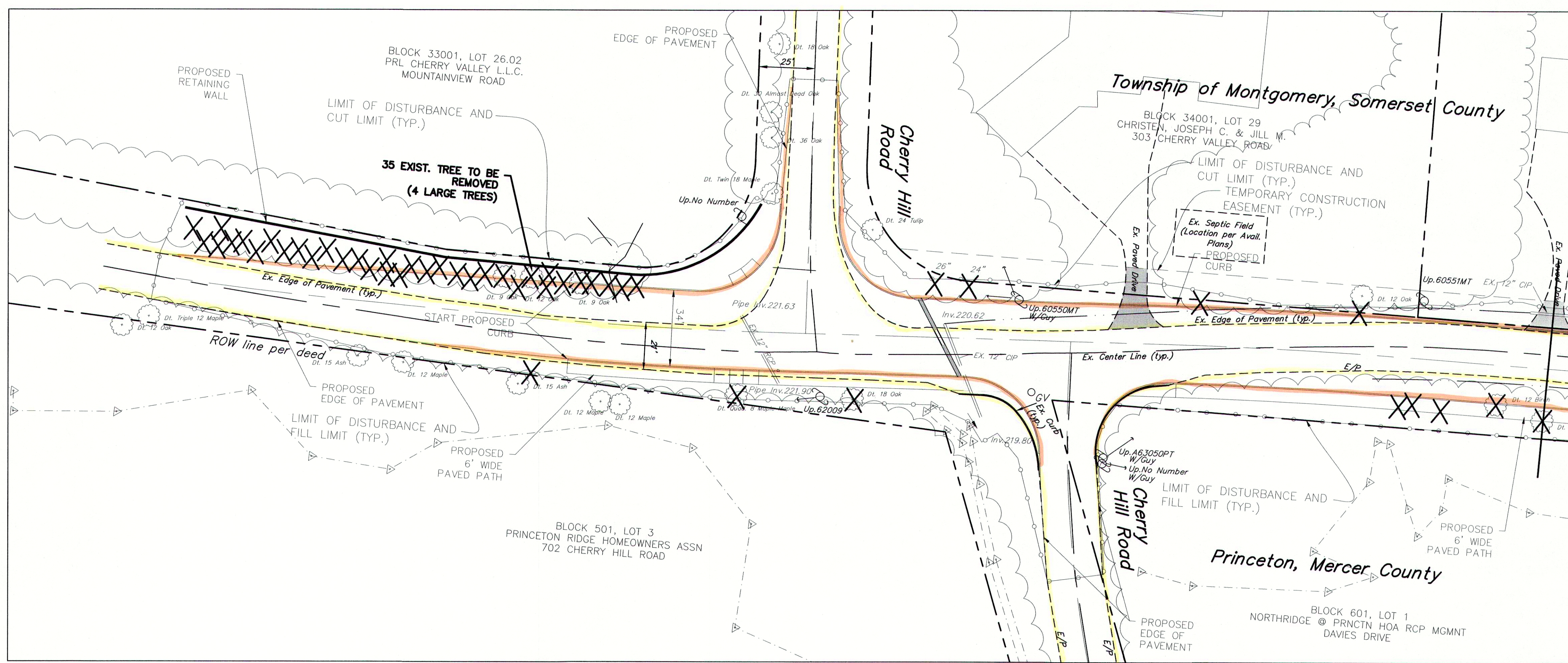


# CONSTRUCTION NOTES:

1. THE CONTRACTOR SHALL SAFELY REMOVE, RELOCATE, TEMPORARILY STORE AND RESET SIGNS, MAILBOXES, FENCES, LANDSCAPING, AND ANY OTHER ROADSIDE OBSTRUCTIONS THAT MAY BE IN CONFLICT WITH THE PROPOSED CONSTRUCTION OR AS DIRECTED BY THE ENGINEER.
2. TREES AND BUSHES SHALL NOT BE TRIMMED OR REMOVED WITHOUT THE PRIOR APPROVAL OF THE TOWNSHIP ARBORIST.
3. THE CONTRACTOR SHALL RECONSTRUCT BITUMINOUS, CONCRETE, AND/OR STONE DRIVEWAY APRONS, WALKWAYS AND DRIVEWAYS AFFECTED BY THE CONSTRUCTION AS DIRECTED IN THE FIELD BY THE ENGINEER.
4. THE CONTRACTOR SHALL PERFORM SUBGRADE REPAIRS AT ANY LOCATION DEEMED UNACCEPTABLE TO THE ENGINEER.
5. THE CONTRACTOR SHALL RESTORE ANY AND ALL EXISTING STRIPING AND PAVEMENT MARKINGS WITHIN THE LIMITS OF THE PROJECT AND INSTALL ANY ADDITIONAL STRIPING AND/OR PAVEMENT MARKINGS AT THE DIRECTION OF THE ENGINEER.
6. THE CONTRACTOR'S SURVEYOR SHALL COORDINATE WITH THE ENGINEER ON FIELD SETTING THE VERTICLE GRADE OF IMPROVEMENTS AT ALL INTERSECTIONS.
7. SIDEWALK LOCATION MAY BE MODIFIED TO PROVIDE HORIZONTAL CLEARANCE TO NEARBY OBSTRUCTIONS AS DIRECTED BY THE ENGINEER.
8. THE CONTRACTOR SHALL PLACE PERMANENT OR TEMPORARY TRENCH RESTORATION PAVEMENT WITHIN THE LIMITS OF ALL SEWER TRENCHES, AS DIRECTED IN THE FIELD BY THE ENGINEER.
9. ALL INLETS WITHIN PAVING LIMITS SHALL RECEIVE ECO-FRIENDLY CURB PIECES AND/OR ECO-FRIENDLY BICYCLE SAFE GRATES, TO COMPLY WITH NJDEP STORMWATER REQUIREMENTS. SEE SPECIAL PROVISIONS.
10. THE CONTRACTOR SHALL PERFORM PUBLIC SIDEWALK CURB RAMP DELINEATION AT ALL CURB RAMPS AND SHALL BE ADA COMPLIANT WITHIN THE LIMITS OF THE PROJECT, AS DIRECTED BY THE ENGINEER. SEE DETAIL.
11. ALL EXISTING AND PROPOSED INLETS SHALL RECEIVE INLET PROTECTION. SEE SOIL EROSION AND SEDIMENT CONTROL PLAN, SHEET 3 OF 22.
12. THE CONTRACTOR'S STAGING AREA SHALL BE CONFINED TO THE LIMITS OF DISTURBANCE THROUGHOUT THE PROJECT AREA. IF THE STAGING AREA LIES WITHIN A VEGETATED AREA THE CONTRACTOR SHALL COMPLETELY AND PERMANENTLY RESTORE THE AREA.

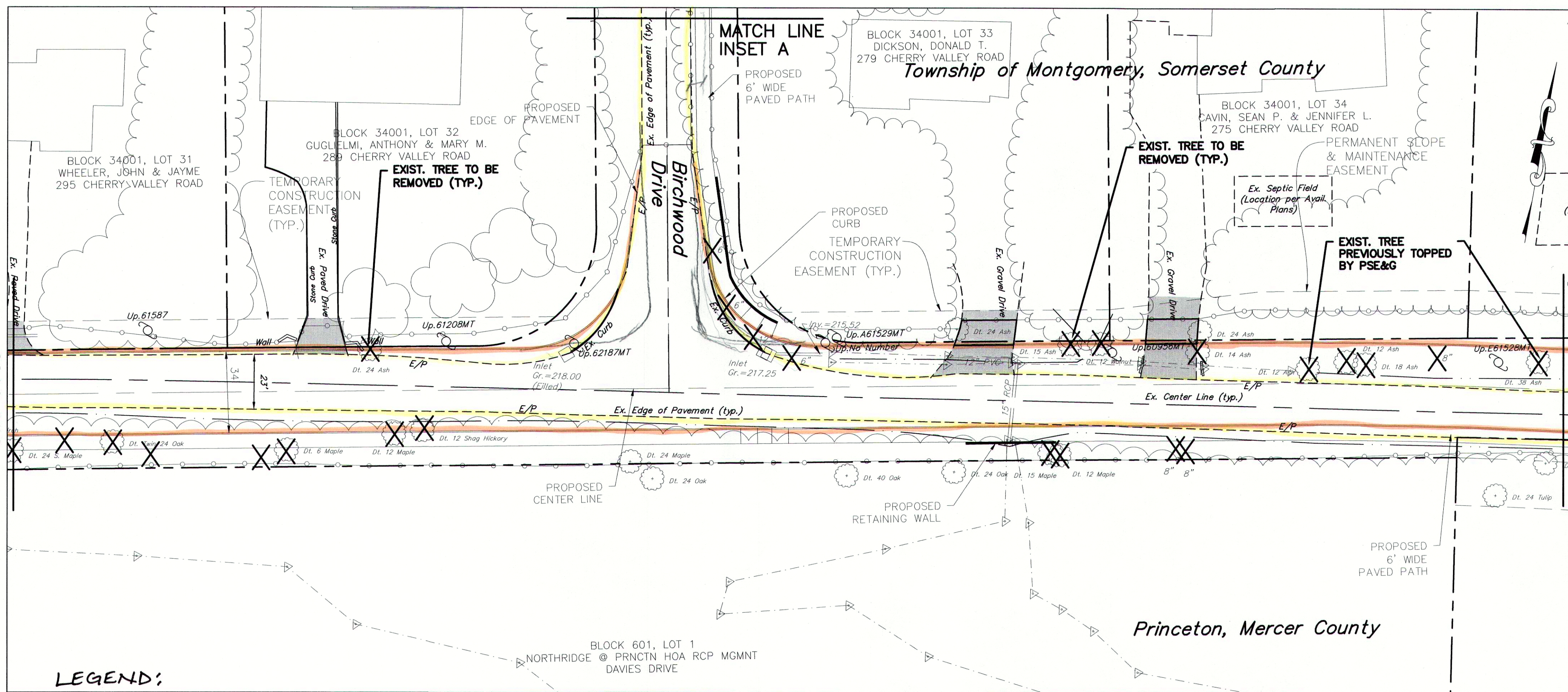
	TEST PIT
	PROPOSED TEST PIT
	EX. CONTOUR LINE
	EX. EDGE OF PAVEMENT
	PROPOSED CURB
	EXISTING CURB
	EX. WATER LINE
	EXISTING SAN. SEWER
	PROPOSED STORM PIPE
	EX. STORM SEWER LINE
	STORM INLET
	STORM MANHOLE
	SANITARY MANHOLE
	MAIL BOX
	STREET SIGN
	STOP SIGN
	GAS VALVE
	WATER VALVE
	UTILITY POLE
	FIRE HYDRANT
	SURVEYED TREE
	STONE DRIVEWAY
	EX. GAS LINE
	FIRE HYDRANT
	WATER SERVICE
	WATER VALVE
	ASPHALT DRIVEWAY
	GAS SERVICE
	WETLAND LINE
	LIMIT OF DISTURBANCE FOR PROPOSED ROAD CONSTRUCTION

MATCH LINE  
STA. 6+50



MATCH LINE  
STA. 6+50

MATCH LINE  
STA. 6+50



MATCH LINE  
STA. 13+00

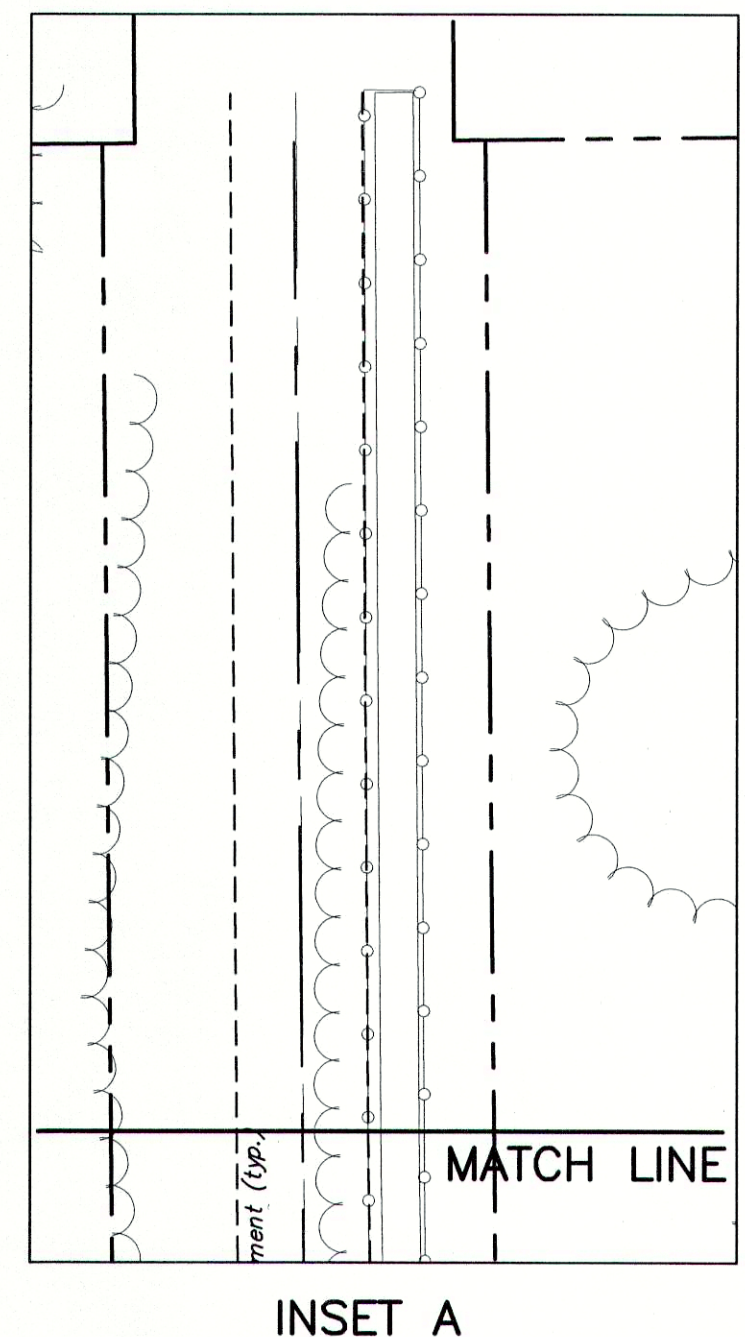
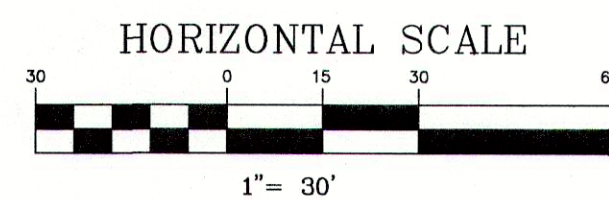
## LEGEND:

- EXISTING EDGE OF PAVEMENT
- PROPOSED PAVEMENT LIMIT & CURB

ITEM	DESCRIPTION	UNIT	QUANTITY
1	TRAFFIC CONTROL, IF AND WHERE DIRECTED	LS	1
2A	TREE REMOVAL, 6"-18" DBH, IF AND WHERE DIRECTED	EA	100
2B	TREE REMOVAL, > 18"-24" DBH, IF AND WHERE DIRECTED	EA	40
2C	TREE REMOVAL, > 24"-30" DBH, IF AND WHERE DIRECTED	EA	8
2D	TREE REMOVAL, > 30"-45" DBH, IF AND WHERE DIRECTED	EA	9
2E	TREE REMOVAL, > 45" DBH, IF AND WHERE DIRECTED	EA	8

## TREE REMOVAL PLAN NOTES & KEY:

1. THE PROPOSED IMPROVEMENTS, OTHER THAN TREE REMOVAL ARE SHOWN FOR REFERENCE ONLY AND ARE NOT PART OF THIS CONTRACT.
  2. TREES SLATED FOR REMOVAL ARE TAGGED WITH RED RIBBON AND RED PAINT ON-SITE.
- X TREE TO BE REMOVED AS PART OF THIS CONTRACT



INSET A



CHERRY VALLEY ROAD TREE REMOVAL  
DEANNA L. STOCKTON, P.E.  
NEW JERSEY PROFESSIONAL ENGINEER  
NEW JERSEY LICENSE NO. 42732

CONSTRUCTION LAYOUT PLAN STA. 0+00 TO STA. 13+00  
PRINCETON  
DEPARTMENT OF ENGINEERING  
WITHERSPOON BUILDING, 400 WITHERSPOON STREET, PRINCETON NJ 08540  
TELEPHONE: (609) 921-7077 FACSIMILE: (609) 688-2026

Date: JAN. 2017  
Scale: 1"=30'  
Drawn: AF  
Check: DLS  
View: LAYOUT  
Job#: CVR EAST  
Dwg: WORKING

FOR BIDDING PURPOSES ONLY Sheet 4 of 5